



SMART Life  
P.O. Box 5107 Safat  
13052 Kuwait  
Telephone: 24817351  
Fax: 2483-2829

ISSNAD Group

# SMART Life

M A N A G E D S E R V I C E S

Design © Summer Ali  
SummerVisions.com



# PRO

# FILE

**We help real estate owners deliver the highest quality, cost-efficient, Smart Life Managed Services to their tenants.**

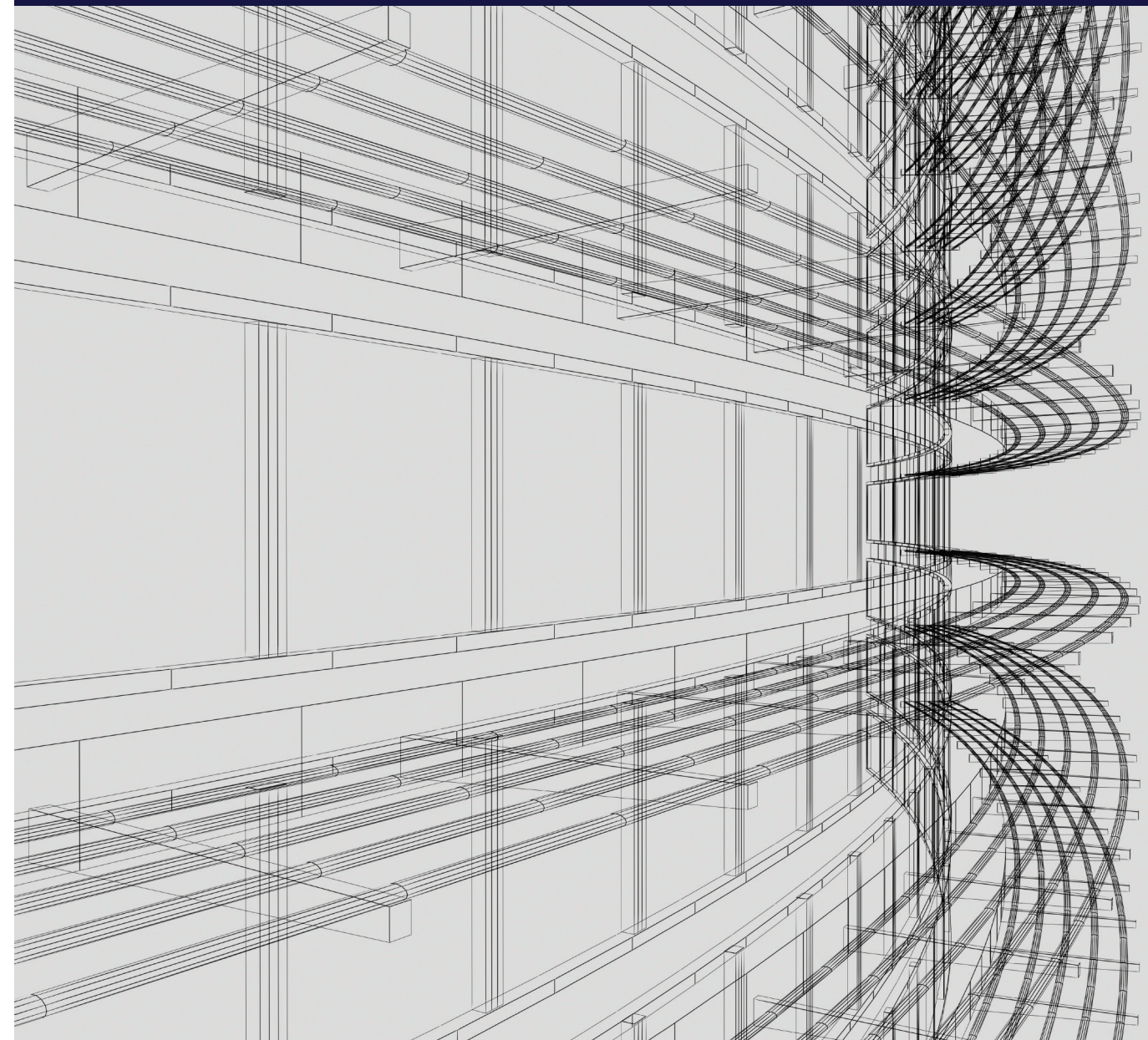
**W**hether our Design and Engineering Services are applied to new construction at the architectural design stage or at a later stage in the project, Smart Life provides the necessary resources to help its clients achieve and maintain the highest standards in Smart building design. Our resources include a full complement of passive and active components design services, program management services, management and operation of Smart Life services, smart infrastructure construction supervision, quality professional staff, and a history of successful projects in the public and private sectors in Kuwait.

**A**s part of our management methodology, Smart Life works closely with its clients to develop the terms of the project plan, scope of work, project objectives and the criteria for measuring the project's success. We dedicate our resources to the best practices in our design services, cost containment, total adherence to project schedule while at the same time delivering quality work that exceeds client's expectations. We take into consideration the client's requirements and if necessary we alter our internal procedures and systems and staff to meet the specific task at hand.

**S**mart Life provides a comprehensive suite of services starting with design and engineering services and ending with the management and operation of Smart Life systems in a property. Following the testing and commissioning of Smart Life systems in a property, our focus shifts to serving the tenants and users of the real estate facility by managing the network infrastructure, delivering Information Technology systems to tenants (i.e. voice & data, Safety & Security, Multimedia, Business Continuity), supporting the Building Management System (BMS) by using the same Information Technology (IT) network of the property, and helping Facilities Management operators in integrating their Information Management Systems with the IT network of the property.

**O**ur services fall into four major categories, namely, Consultancy & Design, Procurement Management, ICT infrastructure Construction Management, and Project Operation Management. We are flexible in the way we serve our client's needs by packaging the four services in a way that best suits the client's financial and operational needs. The services we provide are intended for real estate owners and developers who strive to bring uniqueness to their properties by adapting the latest advances and trends in the real estate industry, owners and developers who appreciate the economic value Smart Life services bring in terms of increasing the property value, and last but not least tenants who are looking for productivity and well being value.

**S**mart Life prides itself in being a customer-focused company totally responsive to change, balanced by a clear understanding that value and quality guide its decision-making. Our success and repeat business comes as a result of providing a dedicated and highly qualified staff of trained engineers and professionals. The management and staff of Smart Life are trained to be responsive and flexible in servicing customers' needs and solving their problems.



**“** *The services we provide are intended for real estate owners and developers who strive to bring uniqueness to their properties by adapting the latest advances and trends in the real estate industry...* **”**



# Professional Services



Smart Life offers a full complement of services that specifically target the real estate industry including smart building infrastructure design and engineering services as well as managing and operating Smart Life systems in new and existing real estate facilities.

Through its unique and innovative Work Program, Smart Life can provide consultancy services from the earliest planning stages of a real estate project right through its operation. Smart Life can also be contracted for an existing real estate facility in need of a face-lift to make it “smart”.

We have designed our Work Program to be totally synchronized with the real estate master construction work program. We tailor our services and staff to meet the needs and budget of the client while maintaining the most professional attitude. We listen to what the client has to say and we make sure his project’s needs are fulfilled.

# Design & Engineering

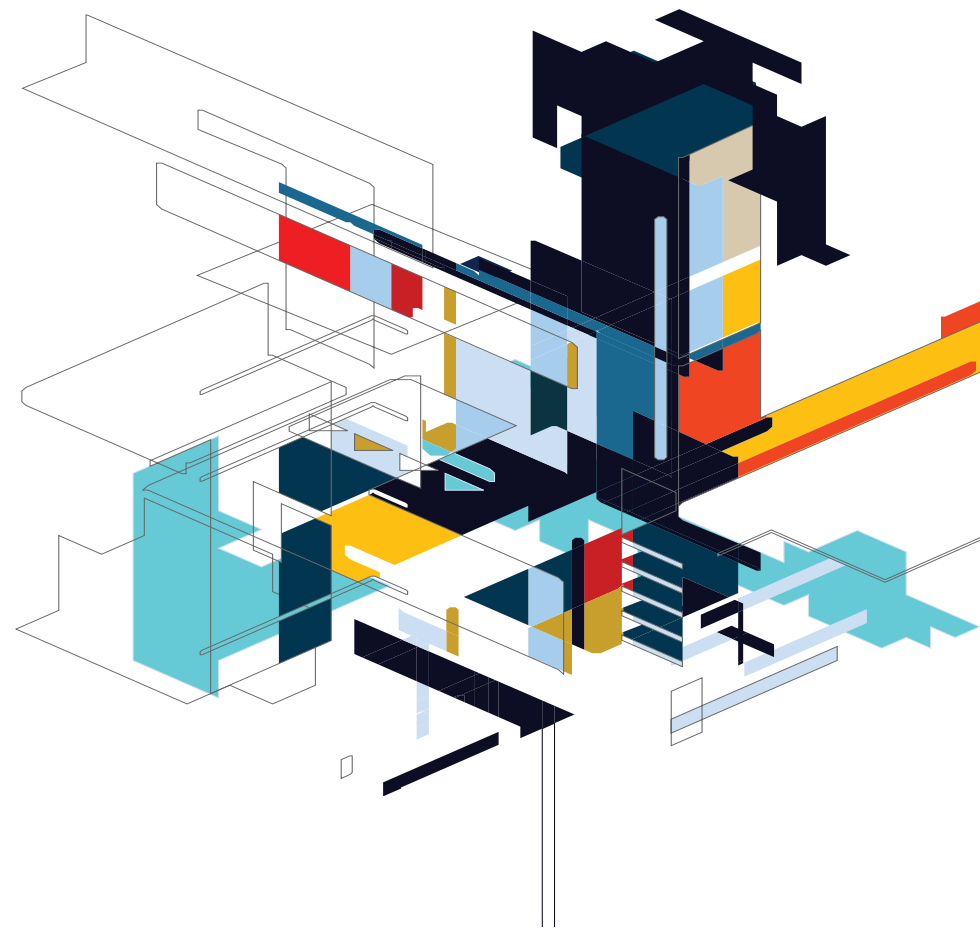
**To remain flexible, we grouped our Design and Engineering Services into four packages that the client can choose depending on his needs:**

Package 1 - Consultancy & Design and Procurement Management

Package 2 - Consultancy & Design, Procurement Management, and Construction Management

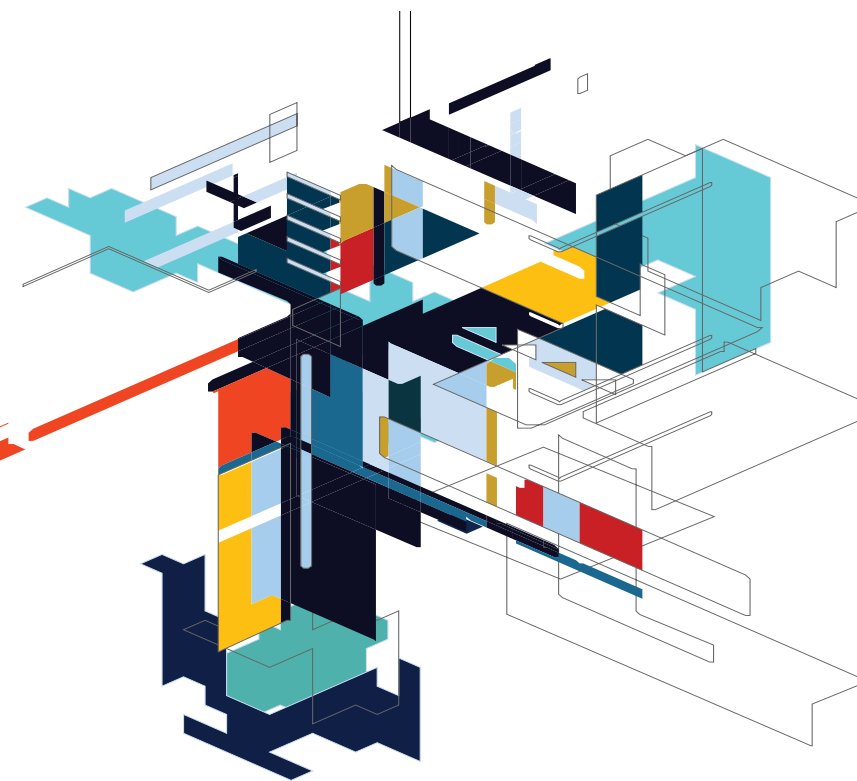
Package 3 - Project Operation Management including Marketing Support Strategy

Package 4 - All of the above



## MANAGING AND OPERATING SMART LIFE SYSTEMS IN THE REAL ESTATE FACILITY

Following the testing and commissioning of all Smart Life Systems in a real estate facility, Smart Life focus now shifts to serving the tenants and users of the facility in the following ways:



- ❖ Managing the network infrastructure - we deliver the physical layer of the infrastructure to the tenants
- ❖ Managing the Information Technology Services - we deliver to the tenants services such as voice & data, Safety & Security, Multimedia, Business Continuity
- ❖ Integration of the Building Management System (BMS) - if a building is equipped with a BMS, we make sure the design of the IT infrastructure is based on open standards so that the BMS can be supported by the same IT network of the facility
- ❖ Facility Management Systems Support - we provide IT support to help facilities management contractors enhance their delivery of solutions in addition to integrating their Information Management Systems with the facility's IT network

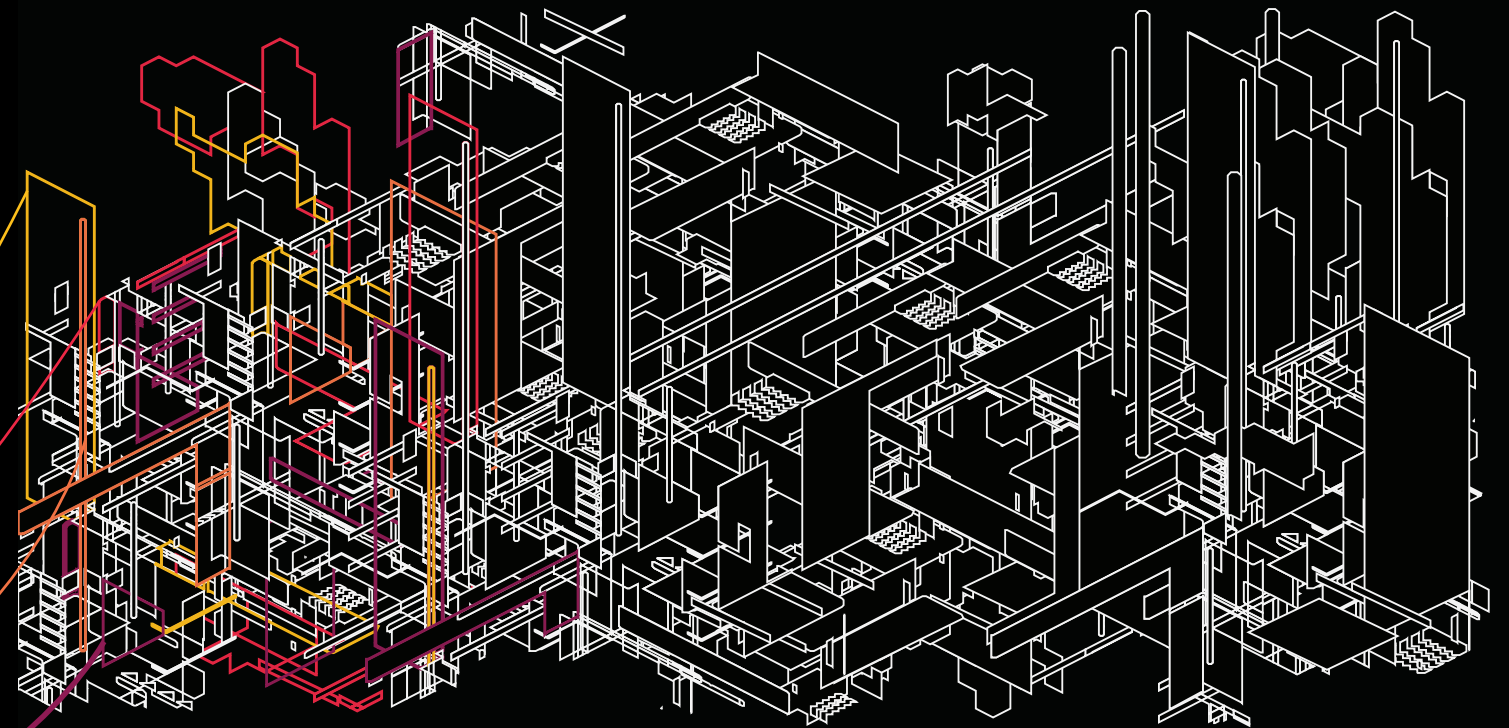
# EXPERIENCE

Since its creation in 2005, Smart Life has successfully completed major projects in Kuwait and the surrounding region. Our Smart Life Systems experience includes governmental offices, hotels, resorts, education facilities, major private real estate developments as well as infrastructure and planning projects. We pride ourselves in the number of repeat customers we have due to the first class quality services we provide and best practices we follow with our clients. We have repeatedly exceeded our clients' expectations. Smart Life has compiled a portfolio of completed projects valued over hundreds of millions of Kuwaiti Dinars of construction over the last four years.

Our secret is in the Work Program we have developed for the Smart Life Systems. We made sure the Work Program allows us to remain creative because we listen to what owners and developers have to say and we make sure our Work Program satisfies their needs. We also understand the challenges owners and developers of real estate face in their day-to-day activities and we are there to accommodate their needs. Our staff are highly trained and dedicated to providing our clients with best quality work delivered with the highest professional ethics.

As a company dedicated to the development of the best and latest Smart Building Systems using state-of-the-art technologies, our scope of work includes but not limited to the following:

- Design of passive, active and voice, and multi-media systems
- Procurement management of the Smart Building Systems hardware based on international standards
- Supervision and management of the implementation and construction of Smart Building Systems
- Development and execution of the Smart Managed Services marketing and operation plans





# PROJECTS





# AL-KHARAFI TOWER JIBLA KUWAIT

## Client

Mohammed Abdul Mohsen Al-Kharafi & Sons

## Completion Date

2004

## Project Status

Operational

## Project Overview

Al-Kharafi Tower is a 20-floor office building located in one of the most prestigious business districts in Kuwait City in an area historically known as Jibla. It was completed at the end of 2004. The building is the home to some of the most prominent international and local companies. The building's attractive architectural design and the spaciousness of its floors, in addition to its closeness to the business and financial districts in Kuwait, makes this building a highly sought-after destination for major companies.

## Project Scope

Smart Life was introduced into the project during the later stages of the construction phase to review and assess the adequacy of the Information Technology (IT) infrastructure design. Our analysis revealed some shortcomings in the current infrastructure, and as a result, Smart Life recommended to the owner the replacement of the conventional infrastructure with IT-based infrastructure. As a result, the project owner tasked Smart Life to provide a new design for the smart building infrastructure, manage the procurement of smart systems, and operate the smart managed services in the tower.



# AL-NASSAR TOWER

JIBLA  
KUWAIT

## Client

Khalifa Al-Nassar

## Completion Date

2007

## Project Status

Operational

## Project Overview

Al-Nassar tower is a 32-floor office building located at the heart of business center of Kuwait City. The tower occupants are major local and regional businesses. In addition, the tower's lower floors are home to a small but prestigious shops representing international brands in fashion/clothing and jewelry.

## Project Scope

Smart Life was contracted during the early stages of the construction phase to design the smart building infrastructure, manage the procurement of smart systems, and operate the smart managed services in the tower. The scope of work also called for Smart Life to develop a self-sufficiency plan for the project owner that will allow him to operate and manage the smart services on his own once the project is ready for occupancy.

## Client

Ministry of Interior

## Completion Date

2011

## Project Status

Under Construction

## Project Overview

This project is part of the Ministry of Interior effort to build a training center for Kuwait's Special Forces. The project involves the building and equipping of the new headquarters and training grounds of the special forces with the most advanced IT systems. The facility is to be used by Kuwait's Special Forces for training cadets in the latest techniques and technologies in city warfare, hijacking, and crowd control using special purpose simulators and shooting ranges.

## Project Scope

Smart Life was contracted to provide the project's main contractor engineering and consultancy services in the design, supply, installation, project management and training on low voltage systems and all supportive IT systems.

# SPECIAL FORCES

S U L A I B I Y A  
K U W A I T

# PROJECT

# THE AVENUES COMMERCIAL CENTER

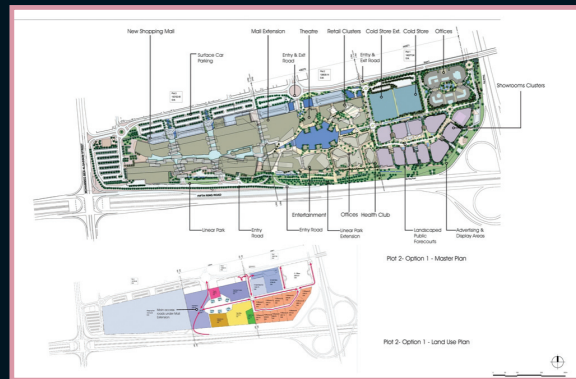
## Client

Mabane Company

## Project Overview

The Avenues is one of the most prestigious developments in the retail industry in Kuwait. The Avenues has a gross built-up area of almost 1,000,000 square meters with a retail gross leasable area of 330,000 square meters and parking facilities for more than 14,000 cars. The Avenues is home to many major international anchor retailers as well as food and beverage outlets.

SHUWAIKH  
KUWAIT



## Completion Date

2006-2011

## Project Status

Partly  
operational  
& partly under  
construction

## Project Scope

The owners of the project contracted Smart Life to design the active components systems for the project and provide the management support in the procurement of the smart systems for the first phase of the project which constituted about 40% of the total Avenues project. The commercial center is host to the latest in smart building technology well suited to the needs of the retail industry. Smart Life is currently engaged in discussions with the project owner to continue work on the remaining phases of the Avenues project.

# KUWAIT OIL COMPANY (KOC) NEW HEAD OFFICE COMPLEX

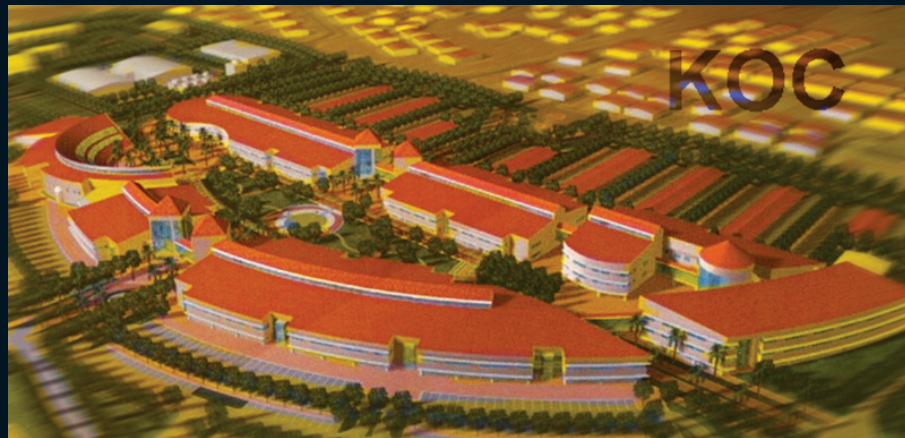
## Client

Kuwait Oil Company

## Project Overview

The KOC Main Office headquarters is the largest office complex in the oil sector in Kuwait. Since KOC is the company responsible for drilling and upstream operations for the Oil & Gas sector in Kuwait, the requirements of the client were very sophisticated due to the fact that KOC has one of the most advanced IT organizations in Kuwait.

AHMADI  
KUWAIT



**Completion Date:** 2009 **Project Status:** Under Construction

## Project Scope

Based on the request of the client, Smart Life was contracted by the prime contractor of the project facilities to manage the supply, installation and commissioning of the Smart Building Systems in the project. The project owner demanded very close coordination amongst the smart building suppliers and the IT organization of KOC in the form of regular progress meetings. Smart Life is currently engaged directly with the owner (KOC) to plan for the Managed Services of the project.

# KUWAIT REGENCY PALACE HOTEL SALMIYA KUWAIT

## Client

Regency Hotel and Palace Company

## Completion Date

2007

## Project Overview

The project's location at Al Bida'a area in Kuwait is considered to be one its most attractive features. With a splendid beach front, the hotel is also conveniently located close to the excellent shopping centers of Salmiya, yet within easy drive to the center of Kuwait city.

## Project Scope

The owners of the project contracted Smart Life to design and provide support to management in the procurement of the smart building systems. The project is planned to host the latest in smart building technology particular to the hospitality industry.

## **Client**

Arab Investment Company

## **Completion Date**

2007

## **Project Status**

Operational

## **Project Overview**

AIC is a newly established investment company specializing in funds management and investment services. The company provides equity and currency trading and other investment services to local and regional investors.

## **Project Scope**

To design and manage the implementation of the most advanced IT & Smart Systems infrastructure to support AIC's business. In addition, the scope of work covered the development of a comprehensive outsourcing plan for the Smart Services of the company. The scope of work also called for Smart Life to develop a self-sufficiency plan for the project owner that will allow him to operate and manage the smart services on his own.

**ARAB INVESTMENT  
COMPANY (AIC)**  
SHARQ  
KUWAIT



**SHARQ  
KUWAIT**

# ARAB REAL ESTATE TOWER

## Client

Al-Arabiya Real Estate Company

## Completion Date

2008

## Project Status

Operational

## Project Overview

Al-Arabiya Tower (AREC) is a 30-floor office building located in the financial district of Kuwait City. The Tower will host major investment and financial companies as well as regional banks.

## Project Scope

Smart Life was contracted at an early stage in the construction phase to design the smart building infrastructure, manage the procurement of smart systems and operate the smart managed services in the tower. The role of Smart Life was later expanded following the completion of the original scope to operate the total Smart Managed Services on revue sharing basis with the project owner.



# WARBA INSURANCE COMPANY TOWER

**SHARQ  
KUWAIT**

## **Client**

Warba Insurance Company

## **Completion Date**

2008

## **Project Status**

Operational

## **Project Overview**

Warba Insurance Company, a subsidiary of Bukhamseen Group, is one of the leading insurance companies in Kuwait providing different types of insurance policies covering health, life, automobile, and maritime. This new head office is located in the heart of the financial and banking districts in Kuwait City.

## **Project Scope**

Smart Life developed the design of the IT and Smart Systems and managed the procurement of all the related contractors who were supervised by Smart Life to implement the systems. The scope covered the development of a comprehensive outsourcing scope for the Smart Services of the company.



# CRYSTAL TOWER SHARQ KUWAIT

## Client

Al-Arabiya Real Estate Company

## Completion Date

2010

## Project Status

Under construction

## Project Overview

Crystal Tower is a 52-floor office building located in the heart of the financial district of Kuwait City. The Tower will host major investment and financial companies and its mall area is being developed as one of the major financial centers in the area due to the close proximity of this tower to the banking district and the Kuwait Stock Exchange.

## Project Scope

Smart Life was contracted during the construction phase of the project to design the smart building infrastructure, manage the procurement of smart systems and operate the smart managed services in the tower. Plans are in place to have Smart Life operate the smart Managed Services in the tower on revenue sharing basis with the owner.

# INTERCONTINENTAL TOWER **S H A R Q** **K U W A I T**



## **Client**

Al Arabiya Real Estate Company

## **Completion Date**

2011

## **Project Status**

Under construction

## **Project Overview**

The Intercontinental Tower is a 60-floor building located near the financial district of Kuwait City. The Tower is a mix use facility hosting a hotel, commercial offices, retail space, and a parking garage.

## **Project Scope**

Smart Life was contracted during the construction phase of the project to design the smart building infrastructure, manage the procurement of smart systems and operate the smart managed services in the tower. Plans are in place to have Smart Life operate the smart Managed Services in the tower on revenue sharing basis with the owner.



## SALMIYA KUWAIT

# SYMPHONY COMPLEX

### **Client**

The Commercial Real Estate Company

### **Completion Date**

2009

### **Project Status**

Under construction

### **Project Overview**

The Symphony Complex is an 11,500 square meter commercial space, offices, and a hotel located in Salmiya with a spectacular view of the Arabian Gulf. The design consists of commercial shops located at various levels. In addition, the complex has two towers; one 11-floor tower designated for offices while the other tower will serve as a 20-floor hotel.

### **Project Scope**

Smart Life was contracted during the project's initial construction phase to design the smart building infrastructure, manage the procurement of smart systems and operate the smart managed services in the tower. Smart Life is currently developing a plan for the project owner in which Smart Life will perform the operation and the marketing of the Smart Managed Services to the future tenants of the complex.



# KUWAIT TRADE CENTER TOWER

**SHARQ  
KUWAIT**

## **Client**

The Commercial Real Estate Company

## **Completion Date**

2009

## **Project Status**

Under construction

## **Project Overview**

The Kuwait Trade Center Tower is a 4,295 square meters facility with a commercial mall divided into a basement, ground, mezzanine and a first floor. Commercial office space occupies a 40-floor tower.

## **Project Scope**

Smart Life was contracted during the project construction phase to design the smart building infrastructure, manage the procurement of smart systems and operate the smart managed services in the tower. Smart Life is currently developing a plan for the project owner in which Smart Life will perform the operation and the marketing of the Smart Managed Services to the future tenants of the tower.

# JUMAN RESIDENTIAL COMPLEX

**FINTAS  
KUWAIT**

## Client

The Commercial Real Estate Company

## Completion Date

2009

## Project Status

Under construction



## Project Overview

The Juman Residential Complex occupies a plot area of 7,950 square meters just outside Kuwait City. The project consists of two major buildings, 12 floors each. The residences design consists of two and three bedroom apartments, penthouses and town houses. In contrast to the desert landscape, the project has created an oasis landscape at the center of the project to provide a unique experience for the residents with swimming pools, children paradise island, and waterfalls. The project also includes sporting facilities such as tennis courts, gymnasium and commercial shops.

## Proposed Project Scope

Smart Life has proposed to the project owner its services to review the original smart building infrastructure design and recommend changes, if required. If accepted by the owner, Smart Life will then manage the procurement of smart systems and operate the smart managed services in the complex.

# RUBA RESIDENTIAL COMPLEX

**FIN T A S**  
**KU W A I T**

## **Client**

The Commercial Real Estate Company

## **Completion Date**

2009

## **Project Status**

Under construction



## **Project Overview**

The Ruba Residential Complex is located in Mahboula just outside Kuwait City with land area of 5,373 square meters. The project consists of one building with 15 floors and two basements. This project is a mix of different dwelling units such as individual townhouses, 2-bedroom, 3- bedroom units and penthouses. In addition, the project has outdoor and indoor recreational facilities such as a health club, squash court, swimming pools, and a play area for children.

## **Proposed Project Scope**

Smart Life has proposed to the project owner its services to review the original smart building infrastructure design and recommend changes, if required. If accepted by the owner, Smart Life will then manage the procurement of smart systems and operate the smart managed services in the complex.

# OLYMPIA COMPLEX

SALMIYA  
KUWAIT



## Client

United Resources Real Estate Company

## Completion Date

2008

## Project Status

Operational

## Project Overview

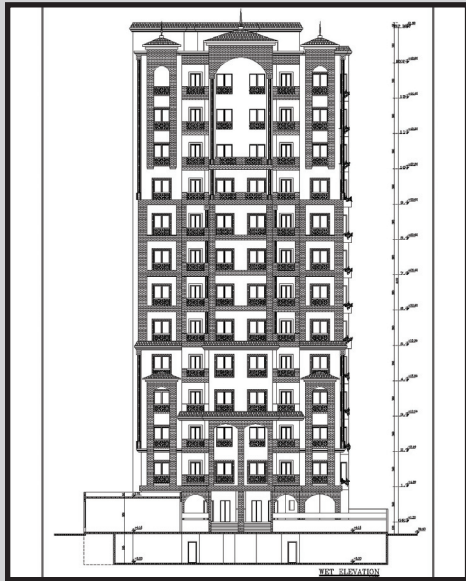
The new Olympia Complex replaces the old Olympic Council of Asia (OCA) headquarters with a modern complex comprising two business office towers, a 5-star hotel, a commercial mall, and the new OCA headquarters.

## Project Scope

Smart Life was contracted during the construction phase to design the smart building infrastructure, manage the procurement of smart systems and operate the smart managed services in the tower.

# FINTAS RESIDENTIAL COMPLEX

FINTAS  
KUWAIT



## Completion Date

2009

## Project Status

Under construction

## Client

United Resources Real Estate Company

## Project Overview

Fintas Residential Complex consists of 2 towers with 12 floors each overlooking the Arabian Gulf.

## Project Scope

Smart Life was contracted during the construction phase to design the smart building infrastructure, manage the procurement of smart systems and operate the smart managed services in the tower.

# OTHMAN COMMERCIAL COMPLEX

## Client

Public Authority for Minors Affairs

## Completion Date

2010

## Project Status

Under design

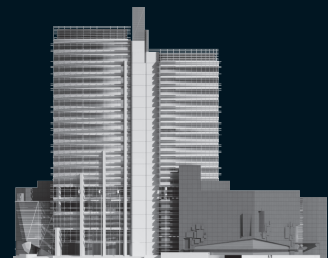
## Project Overview

The Othman Commercial Complex has a total rentable area of 23,500 square meters and consists of 3 basement levels with one level designated as a shopping area while the other lower levels are used for parking. The ground and mezzanine levels are also used for shops. Offices are located in a 13- floor tower.

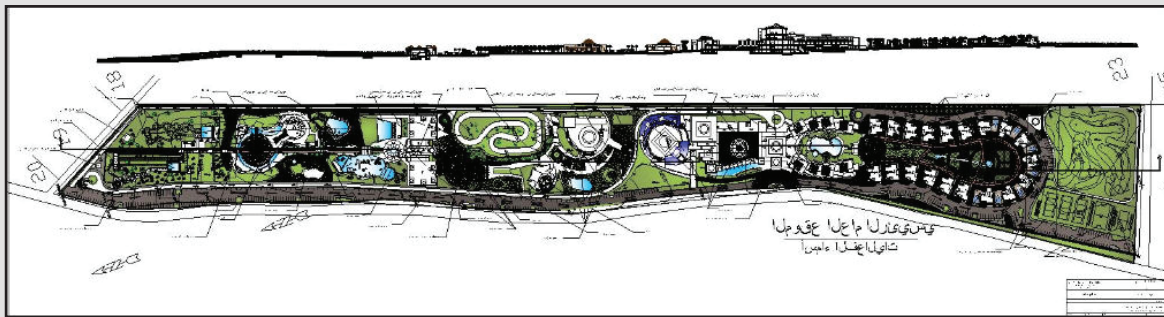
## Project Scope

Smart Life was contracted during the construction phase to design the smart building infrastructure, manage the procurement of smart systems in the tower.

HAWALLI  
KUWAIT



# PALM ALEPPO SYRIA RESORT



## Client

Geneva Novelties Company

## Completion Date

2009

## Project Status

Under construction

## Project Overview

The Palm Resort is located in Aleppo, Syria. The project is a mix use facility consisting of residential villas, motel, restaurants, playgrounds, and a water park.

## Project Scope

Smart Life was contracted during the construction phase to design the smart building infrastructure, manage the procurement of smart systems and operate the smart managed services in the resort. Smart Life was tasked to design the resort's managed services operation.

# ADMINISTRATION, EDUCATIONAL & STUDENT SERVICES BUILDINGS SHUWAIKH CAMPUS



## SHUWAIKH KUWAIT

### Client

Public Authority for Applied Education & Training (PAAET)

### Completion Date

2011

### Project Status

Under Construction

### Project Overview

The Public Authority for Applied Education & Training is in the process of building the new Administration Offices at the Shuwaikh Campus. The project in total will have 18 floors used as an education center, a resources center, information and media center, students' services center, theater- auditorium, mosque, and car parking.

### Project Scope

Smart Life was contracted during the design stage to work with the designated Engineering Office responsible for the overall design of the facility. Smart Life is responsible for the design of the Smart Building Systems, IT infrastructure design, and developing the procurement of the Smart Systems. Smart Life is currently in negotiation with the Engineering Office in charge of the design to actively participate in the construction management phase for the Smart Life Services.

# SPECIAL TRAINING CENTER



**SHUWAIKH  
KUWAIT**

## **Client**

PAAET

## **Completion Date**

2009

## **Project Status**

Under construction

## **Project Overview**

Public Authority for Applied Education & Training is in the process of building a Special Training Center at Shuwaikh Campus with approximate built-up area of 200,000 square meters

## **Project Scope**

Smart Life was contracted at a fairly early stage in the construction phase by Tanmiya (a joint venture company between PAAET and ISSNAD Urban Development Company) to take part in two distinct phases within the project. The first phase is to design and build the Smart Systems infrastructure while the second phase is to develop the procurement documentation for the active components systems, low voltage systems, and the classroom Smart Systems.

# COLLEGE of BUSINESS STUDIES

## MALES AND FEMALES

**ARDIYA  
KUWAIT**

### Client

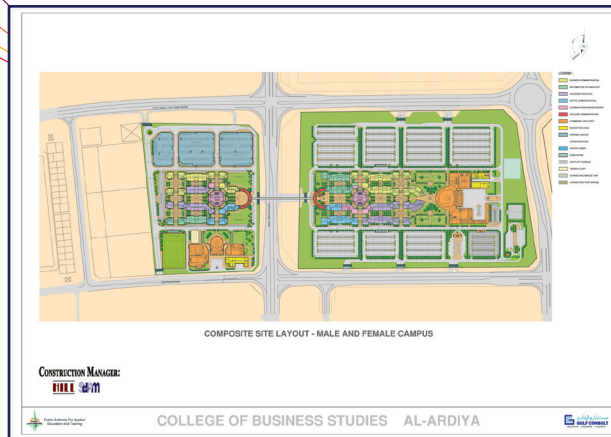
PAAET

### Completion Date

2010

### Project Status

Under construction



## Project Overview

The College of Business Studies to be built on total estimated area of 448,500 square meters represent two separate sites, one site for male students and the other for female students. The two campuses are linked by a bridge. Each college campus consists of four major buildings arranged around a central building located in the middle. In addition, there are other buildings located throughout both campuses. The total built-up area is approximately 265,000 square meters including the multi-level car parking area and estimated open area car parking equivalent to 250,000 square meters.

## Project Scope

Smart Life was contracted at a fairly early stage in the construction phase by Tanmiya (a joint venture company between PAAET and ISSNAD Urban Development Company) to take part in two distinct phases within the project. The first phase is to design and build the Smart Systems infrastructure while the second phase is to develop the procurement documentation for the active components systems, low voltage systems, and the classroom Smart Systems.

# COLLEGE of BASIC EDUCATION

## BOYS AND GIRLS

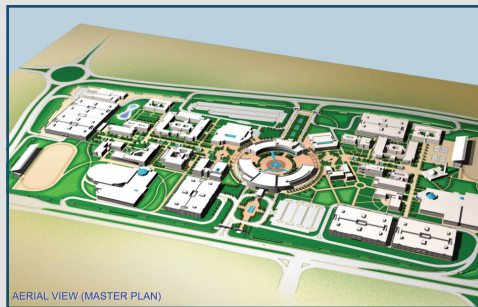
### Client

PAAET

### Project Overview

The College of Basic Education is to be built on a total estimated land area of 500,000 square meters, consisting of thirty structures with separate facilities for male and female students. The project includes other buildings such as an academic center, central administration, academic communal, physical education complex, hostels, mosque, and a central plant. The total built-up area is about 200,000 square meters. There are five multi-level car parking structures having a total built-up area of 184,000 square meters.

ARDIYA  
KUWAIT



### Completion Date

2010

### Project Status

Under Construction

### Project Scope

Smart Life was contracted at a fairly early stage in the construction phase by Tanmiya (a joint venture company between PAAET and ISSNAD Urban Development Company) to take part in two distinct phases within the project. The first phase is to design and build the Smart Systems infrastructure while the second phase is to develop the procurement documentation for the active components systems, low voltage systems, and the classroom Smart Systems.



# SEA GULL

## BAHRAIN

### **Client**

Al-Farabi Real Estate Company

### **Completion Date**

2011

### **Project Status**

Under Construction

### **Project Overview**

The Sea Gull project is a unique residential project located in Bahrain with some retail space and health center and a 10-floor residential complex.

### **Proposed Project Scope**

Smart Life has proposed to the project owner its services to review the original smart building infrastructure design and recommend changes, if required. If accepted by the owner, Smart Life will then manage the procurement of smart systems and operate the smart managed services in the complex.

# MUSCAT HEIGHTS

MUSCAT OMAN

## Completion Date

2013

## Project Status

Under Study

## Project Overview

The Muscat Heights Sports Club is a new real estate development concept for a sporting and commercial complex being developed jointly by ISSNAD Urban Development Company, Kuwait and W.J. Towell, Oman. The project is planned as one-of-a-kind complex combining modern sporting facilities with commercial facilities to be built on the existing site currently occupied by the Muscat Club located at Wadi Al-Kabeer. The project calls for demolishing the existing facilities and converting 60% of the land into various structures for sports-related activities while the remaining 40% of the land will be devoted for a 4-star Hotel, office space, residential space, and a commercial complex. The entire project will be spread over 103,038 square meters of land; 88% of which will be built-up development (90,998 square meters). The sporting facilities are intended for use by the youths and the citizens of Oman and for hosting local and international sporting events. The revenues generated from such events will help maintain and promote the future activities in the sporting event

## Project Scope

Smart Life scope of work will be limited to the design the smart building infrastructure, management of the procurement of smart systems and eventually the operation the smart managed services in the tower.

# ALI BIN ALI TOWER

**QATAR**



## **Client**

Ali Bin Ali & Sons

## **Completion Date**

2008

## **Project Status**

Operational

## **Project Overview**

The Ali Bin Ali tower is located on Airport Road in Qatar. The tower consists of ten floors plus the basement and ground levels with a built up area of approximately 18,600 square meters.

## **Project Scope**

Smart Life was contracted during the construction phase to design the smart building infrastructure and manage the procurement of smart systems for the tower.

# ALBIDAA TOWER

## Project Title

AlBidaa Tower – Qatar

## Client

Platinum Tower Company

## Completion Date

2009

## Project Status

Under construction



Q A T A R

## Project Overview

Al Bidda Tower is a 45-floor high-rise comprising a ground floor, 2 basement car park levels as well as a separate 7-level car parking garage with underground access to the tower. Designed in the shape of a tornado, this development also includes provisions for a variety of other facilities including business centers, showrooms, restaurants, art galleries, outdoor cafés and a health club.

## Project Scope

Smart Life was contracted during the construction phase to design the smart building infrastructure and manage the procurement of smart systems for the tower.



# TATWEER INFRASTRUCTURE COMPANY

**QATAR**

## **Project Title**

Tatweer Infrastructure Company - Qatar

## **Client**

Tatweer Infrastructure Company

## **Completion Date**

2007

## **Project Status**

Operational

## **Project Overview**

Tatweer Infrastructure Company is a Qatari company specializing in infrastructure development based on the Build Operate Transfer/Private Public Partnership (BOT/PPP) principle with projects in Qatar and the other Gulf countries.

## **Project Scope**

Smart Life developed the design of the IT and Smart Systems and managed the procurement of all the related contractors who were supervised by Smart Life to implement the systems. The scope covered the development of a comprehensive outsourcing scope for the Smart Services of the company.

